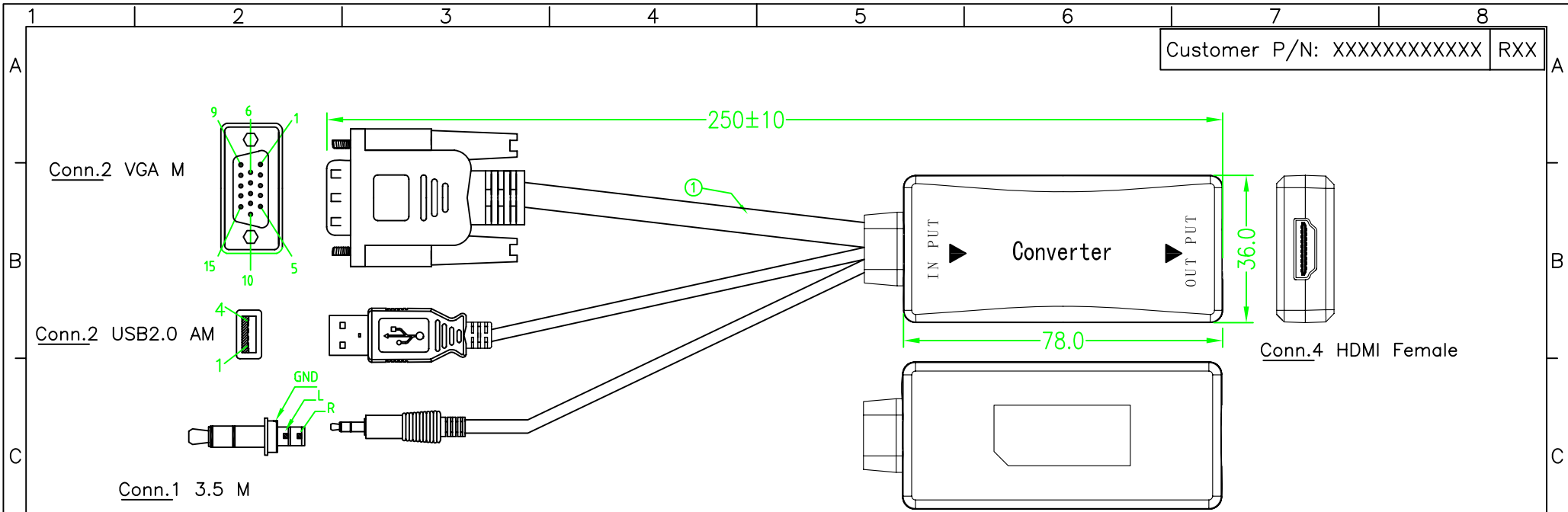


Customer P/N: XXXXXXXXXXXX RXX



NOTE:

1. A. 3COA\*(#32\*1C+S)\*3C+#30\*6C+AEB OD5.5mm  
 B. UL2464 #28(TS)\*2C+S PVC OD3.0mm
- 2.USB2.0 (A) M Solder Type Shell Nickel White Insulation,
- 3.VGA 15 M Solder Type Shell Nickel Blue Insulation,
- 4.DC3.5 Stereo Male, Solder Type Shell Nickel Plated
- 5.HDMI Converter With HDMI Female, PCB+SMT(MS9282)
- 6.ABS molded connector
- 7.INSIDE MOLDING:PE
- 8.OUTSIDE MOLDING:Black

Features

Re: VGA to HDMI test

- 1) Signal source resolution UXGA: 1280\*720p,1920\*1080p
- 2) Refresh rate : 60HZ
- 3) video no signal jitter, drop shadow, Heavy shadow, Miss color pure etc display unusual
- 4) Audio form :L-PCM @ 32KHz,44.1KHz, Dolby,8 Channel, 1bit Audio
- 5) Audio no noise , sound clear
- 6) The cable length : 500MM/MAX
- 7) Electrical Voltage: 5V

REV.	DATE	CONTENTS OF CHANGE	DESIGNER	TOL ±									APPROVAL	CHECK	DRAWING	DESIGN	DRAWING NAME	HDMI TO VGA+USB+DC3.5			
				RANGE	Pla	Met	Ins	Por	Cab	Pac	Gas	DIS						DATE	PART NO.	MF	
①				0~6	0.1	0.1	0.1	0.2	0.5	1	0.5	0.2					2015-07-22				
②				6~30	0.1	0.1	.15	.25	1	1	0.5	.25									
③				30~80	0.1	.15	0.2	0.3	2	1.5	1	0.3									
④				80~180	.15	.15	.25	0.3	2	2	1	.45									
⑤				180~315	.15	0.2	0.3	0.4	2.5	2	1	0.6									
				315~800	0.2	0.3	0.4	0.5	3	3	2	1.1									
												SCALE	1:1	UNIT	MM						